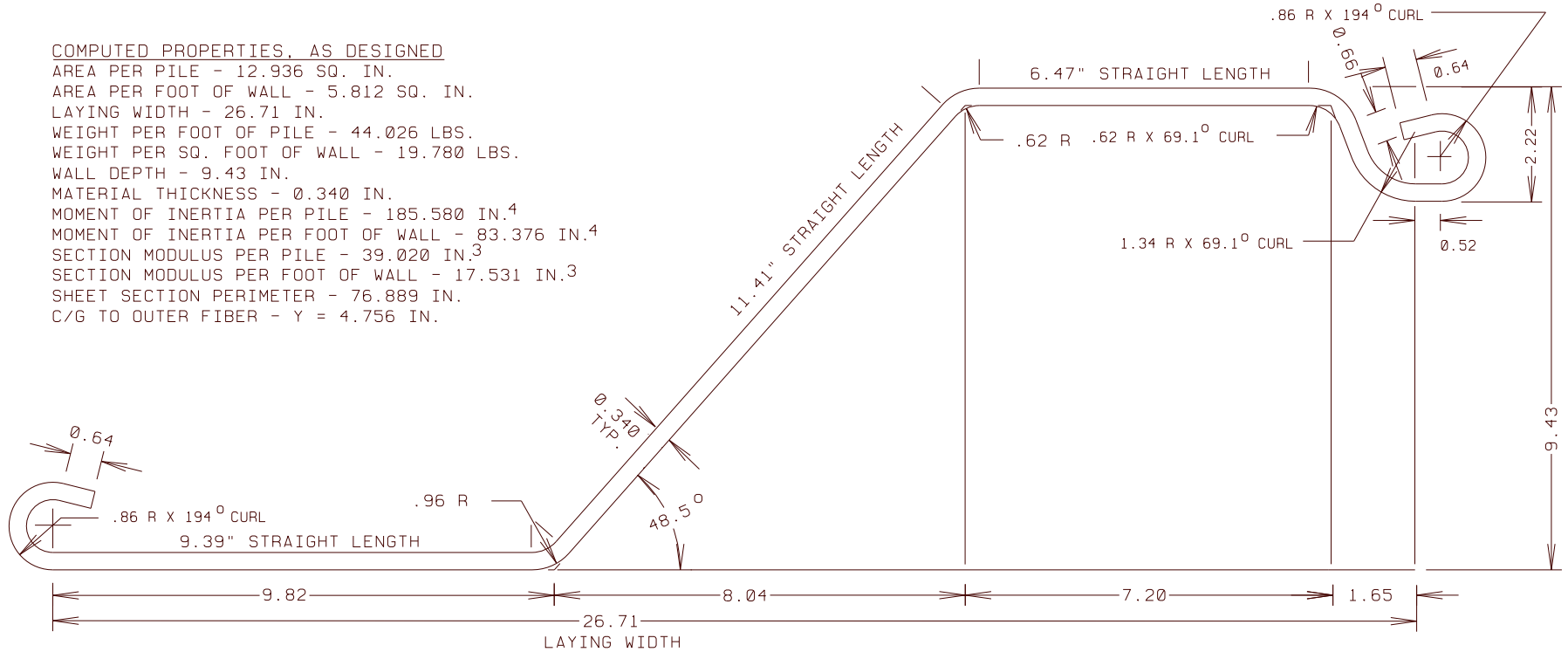


COMPUTED PROPERTIES, AS DESIGNED

AREA PER PILE - 12.936 SQ. IN.
 AREA PER FOOT OF WALL - 5.812 SQ. IN.
 LAYING WIDTH - 26.71 IN.
 WEIGHT PER FOOT OF PILE - 44.026 LBS.
 WEIGHT PER SQ. FOOT OF WALL - 19.780 LBS.
 WALL DEPTH - 9.43 IN.
 MATERIAL THICKNESS - 0.340 IN.
 MOMENT OF INERTIA PER PILE - 185.580 IN.⁴
 MOMENT OF INERTIA PER FOOT OF WALL - 83.376 IN.⁴
 SECTION MODULUS PER PILE - 39.020 IN.³
 SECTION MODULUS PER FOOT OF WALL - 17.531 IN.³
 SHEET SECTION PERIMETER - 76.889 IN.
 C/G TO OUTER FIBER - Y = 4.756 IN.



COATING AREA - SQ.FT.PER LIN.FT.OF PILE
 FOR DIP COATING - 6.41 SQ.FT
 FOR SPRAY COATING - 5.97 SQ.FT.

ROLL FROM .340\" STRIP APPROX. 38.0\" WIDE

DRAWING		SZ 20 NEW STYLE SHEET	
SHORELINE STEEL SUPPLY, INC.			
PROJECT			
SCALE	FULL SIZE	DRAWING DATE	1 DECEMBER 1993
DRAWN BY	J.C.B.	LAST REV. DATE	
GENERAL MARINE SERVICE CORPORATION 22594 ARDMORE PARK DRIVE ST. CLAIR SHORES, MI 48081-2011 586-777-0945			93-1202 DRAWING NUMBER