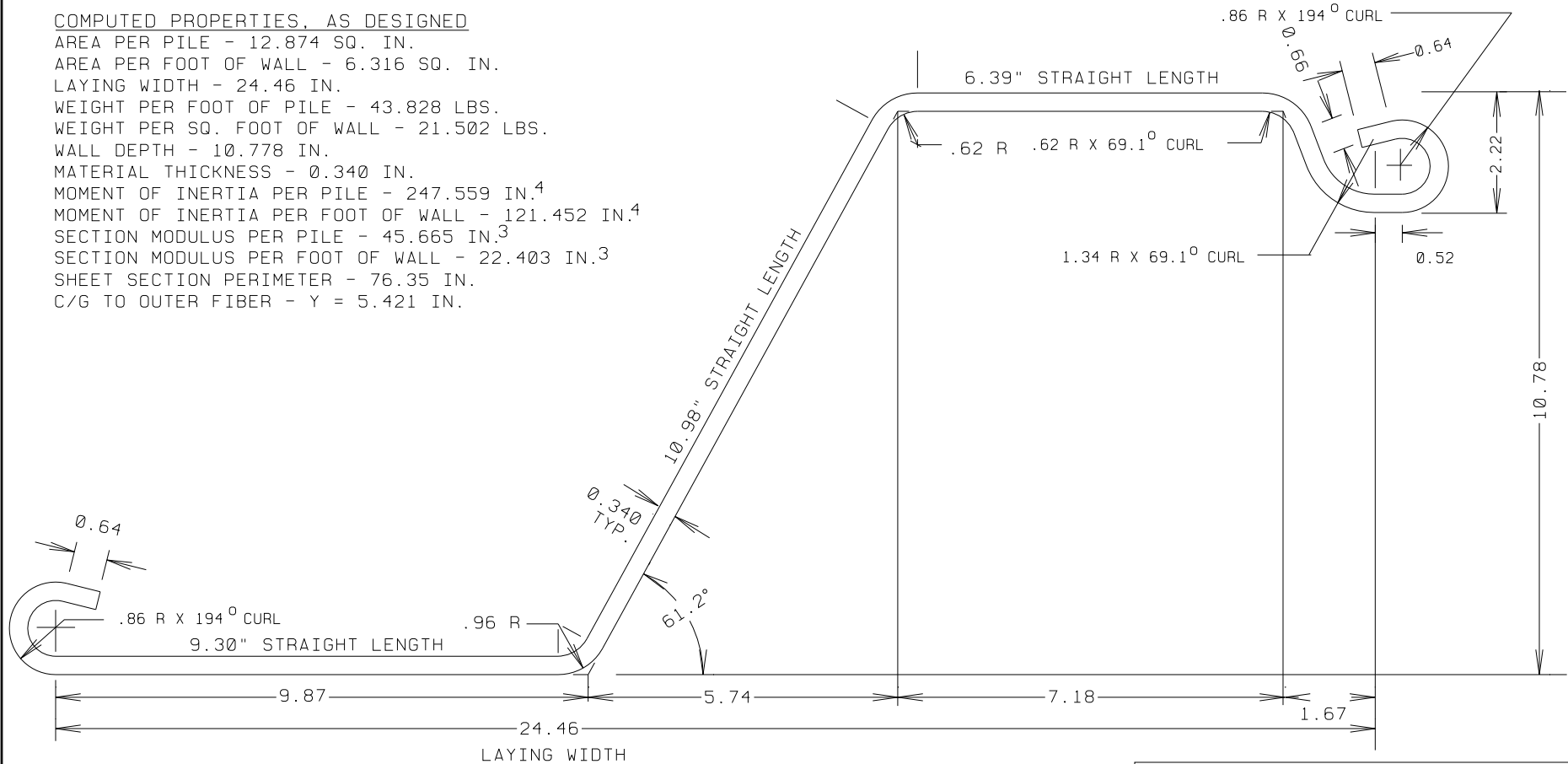


COMPUTED PROPERTIES, AS DESIGNED

AREA PER PILE - 12.874 SQ. IN.  
 AREA PER FOOT OF WALL - 6.316 SQ. IN.  
 LAYING WIDTH - 24.46 IN.  
 WEIGHT PER FOOT OF PILE - 43.828 LBS.  
 WEIGHT PER SQ. FOOT OF WALL - 21.502 LBS.  
 WALL DEPTH - 10.778 IN.  
 MATERIAL THICKNESS - 0.340 IN.  
 MOMENT OF INERTIA PER PILE - 247.559 IN.<sup>4</sup>  
 MOMENT OF INERTIA PER FOOT OF WALL - 121.452 IN.<sup>4</sup>  
 SECTION MODULUS PER PILE - 45.665 IN.<sup>3</sup>  
 SECTION MODULUS PER FOOT OF WALL - 22.403 IN.<sup>3</sup>  
 SHEET SECTION PERIMETER - 76.35 IN.  
 C/G TO OUTER FIBER - Y = 5.421 IN.



ROLL FROM 0.340" STRIP APPROX. 37.8" WIDE

|   |           |                            |                |
|---|-----------|----------------------------|----------------|
| DRAWING   |           | SZ 340 NEW STYLE SHEET     |                |
| PROJECT   |           |                            |                |
| SHORELINE STEEL SUPPLY, INC.  |           | DRAWING DATE 28 MARCH 2003 |                |
| SCALE   | FULL SIZE | LAST REV. DATE             |                |
| DRAWN BY J.C.B.   |           |                            |                |
| GENERAL MARINE SERVICE CORPORATION<br>22594 ARDMORE PARK DRIVE<br>ST. CLAIR SHORES, MI 48061-2011<br>586-777-0945 |           |                            | 03-0328        |
|   |           |                            | DRAWING NUMBER |