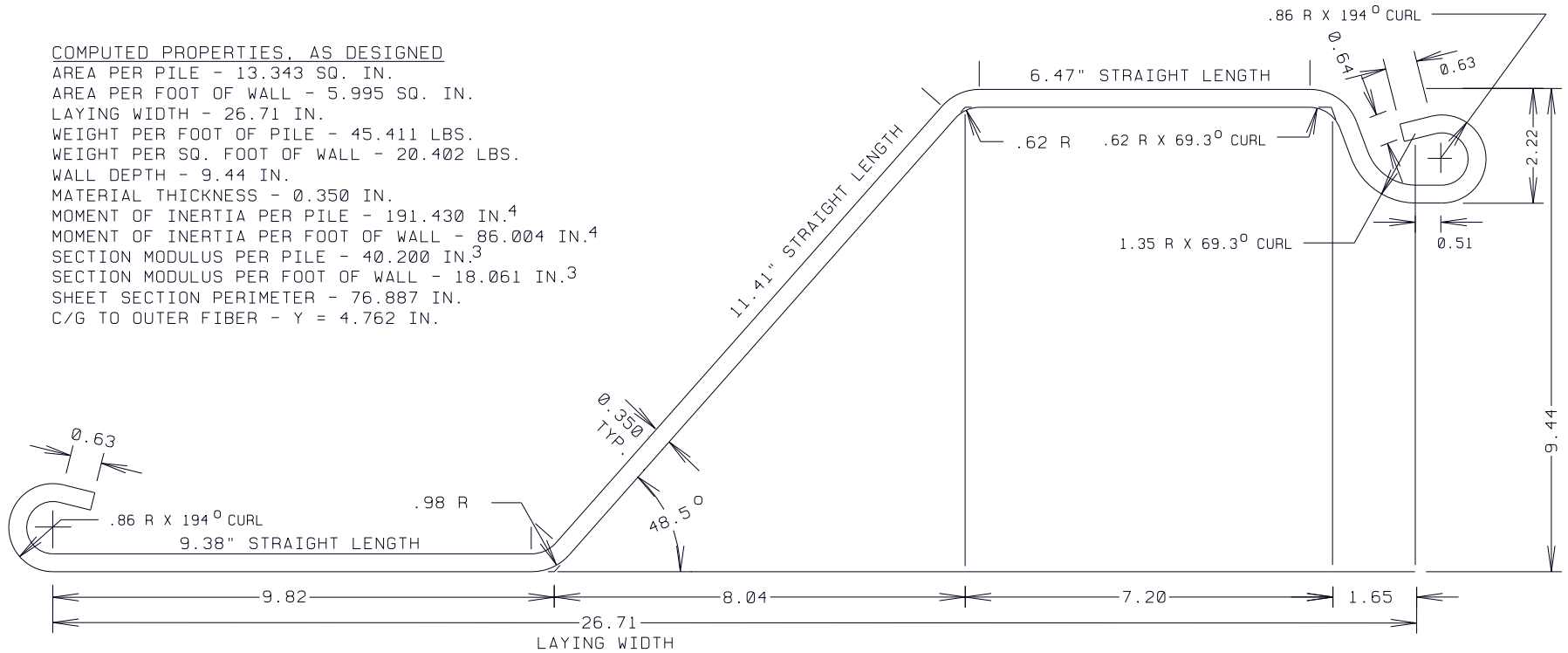


COMPUTED PROPERTIES, AS DESIGNED

AREA PER PILE - 13.343 SQ. IN.
 AREA PER FOOT OF WALL - 5.995 SQ. IN.
 LAYING WIDTH - 26.71 IN.
 WEIGHT PER FOOT OF PILE - 45.411 LBS.
 WEIGHT PER SQ. FOOT OF WALL - 20.402 LBS.
 WALL DEPTH - 9.44 IN.
 MATERIAL THICKNESS - 0.350 IN.
 MOMENT OF INERTIA PER PILE - 191.430 IN.⁴
 MOMENT OF INERTIA PER FOOT OF WALL - 86.004 IN.⁴
 SECTION MODULUS PER PILE - 40.200 IN.³
 SECTION MODULUS PER FOOT OF WALL - 18.061 IN.³
 SHEET SECTION PERIMETER - 76.887 IN.
 C/G TO OUTER FIBER - Y = 4.762 IN.



COATING AREA - SQ.FT.PER LIN.FT.OF PILE
 FOR DIP COATING - 6.41 SQ.FT.
 FOR SPRAY COATING - 5.97 SQ.FT.

ROLL FROM .350" STRIP APPROX. 38.1" WIDE

| | | | |
|---|-----------|-----------------------|---------------------------|
| DRAWING | | SZ 21 NEW STYLE SHEET | |
| SHORELINE STEEL SUPPLY, INC. | | | |
| PROJECT | | | |
| SCALE | FULL SIZE | DRAWING DATE | 1 DECEMBER 1993 |
| DRAWN BY | J.C.B. | LAST REV. DATE | |
| GENERAL MARINE SERVICE CORPORATION 22594 ARDMORE PARK DRIVE ST. CLAIR SHORES, MI 48081-2011 586-777-0945 | | | 93-1201 DRAWING NUMBER |