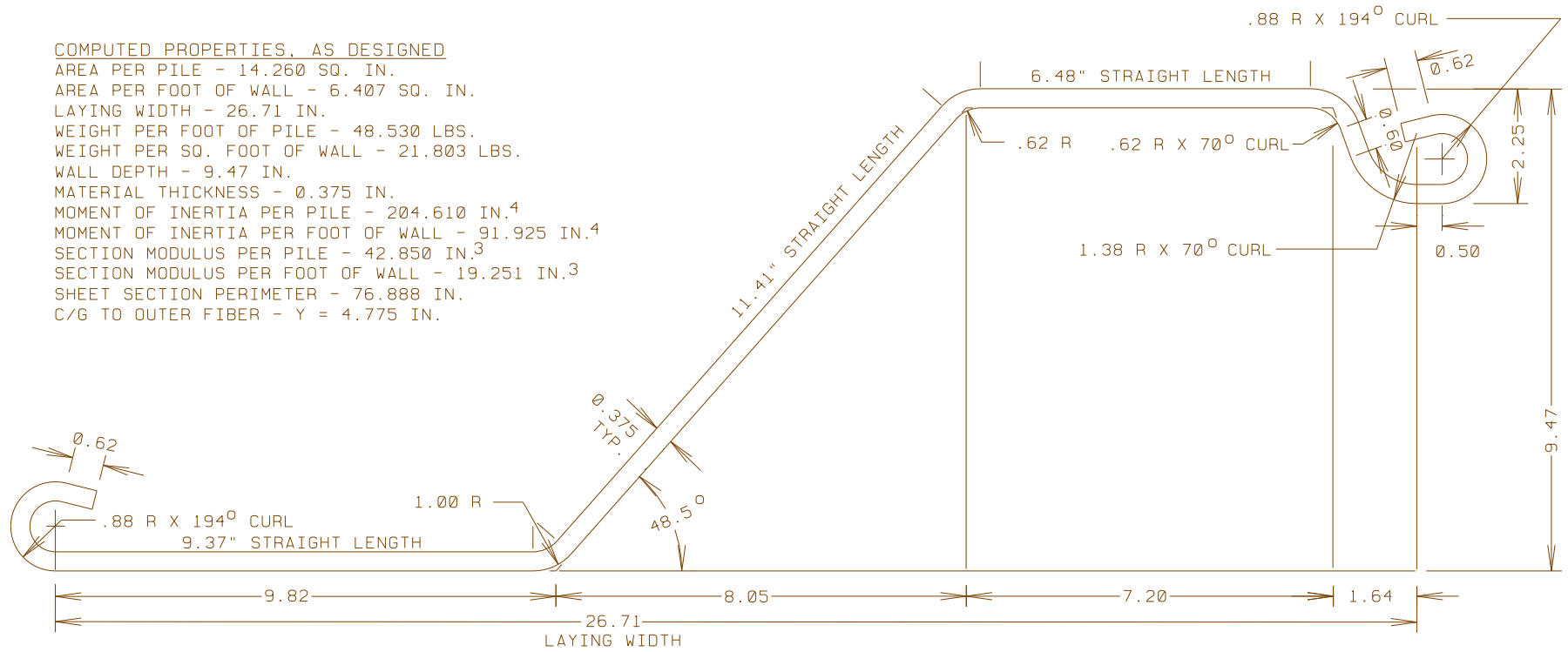


COMPUTED PROPERTIES, AS DESIGNED

AREA PER PILE - 14.260 SQ. IN.
 AREA PER FOOT OF WALL - 6.407 SQ. IN.
 LAYING WIDTH - 26.71 IN.
 WEIGHT PER FOOT OF PILE - 48.530 LBS.
 WEIGHT PER SQ. FOOT OF WALL - 21.803 LBS.
 WALL DEPTH - 9.47 IN.
 MATERIAL THICKNESS - 0.375 IN.
 MOMENT OF INERTIA PER PILE - 204.610 IN.⁴
 MOMENT OF INERTIA PER FOOT OF WALL - 91.925 IN.⁴
 SECTION MODULUS PER PILE - 42.850 IN.³
 SECTION MODULUS PER FOOT OF WALL - 19.251 IN.³
 SHEET SECTION PERIMETER - 76.888 IN.
 C/G TO OUTER FIBER - Y = 4.775 IN.



COATING AREA - SQ.FT.PER LIN.FT.OF PILE
 FOR DIP COATING - 6.41 SQ.FT.
 FOR SPRAY COATING - 6.11 SQ.FT.

ROLL FROM 3/8" STRIP APPROX. 38.0" WIDE

DRAWING		SZ 22 NEW STYLE SHEET	
SHORELINE STEEL SUPPLY, INC.			
PROJECT			
SCALE	FULL SIZE	DRAWING DATE	16 NOVEMBER 1993
DRAWN BY	J.C.B.	LAST REV. DATE	
GENERAL MARINE SERVICE CORPORATION 22594 ARDMORE PARK DRIVE ST. CLAIR SHORES, MI 48081-2011 586-777-0945			93-1116 DRAWING NUMBER