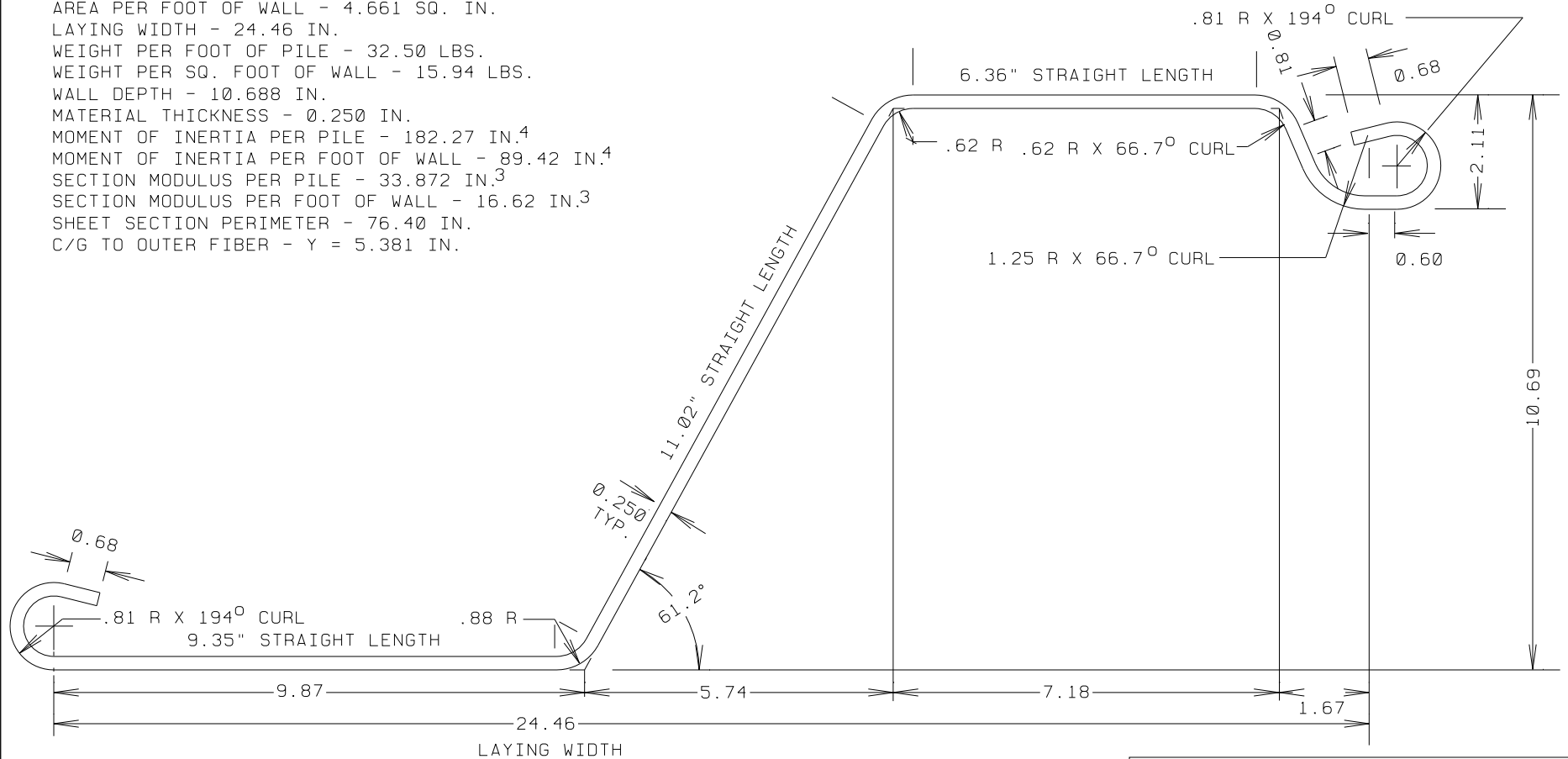


COMPUTED PROPERTIES, AS DESIGNED

AREA PER PILE - 9.500 SQ. IN.
 AREA PER FOOT OF WALL - 4.661 SQ. IN.
 LAYING WIDTH - 24.46 IN.
 WEIGHT PER FOOT OF PILE - 32.50 LBS.
 WEIGHT PER SQ. FOOT OF WALL - 15.94 LBS.
 WALL DEPTH - 10.688 IN.
 MATERIAL THICKNESS - 0.250 IN.
 MOMENT OF INERTIA PER PILE - 182.27 IN.⁴
 MOMENT OF INERTIA PER FOOT OF WALL - 89.42 IN.⁴
 SECTION MODULUS PER PILE - 33.872 IN.³
 SECTION MODULUS PER FOOT OF WALL - 16.62 IN.³
 SHEET SECTION PERIMETER - 76.40 IN.
 C/G TO OUTER FIBER - Y = 5.381 IN.



ROLL FROM 1/4" STRIP APPROX. 38.0" WIDE

ORIGINALLY RELEASED AS DWG. 03-0319 SZ-200

DRAWING		SZ 250 NEW STYLE SHEET	
PROJECT		SHORELINE STEEL SUPPLY, INC.	
SCALE	FULL SIZE	DRAWING DATE	26 MARCH 2003
DRAWN BY	J.C.B.	LAST REV. DATE	
GENERAL MARINE SERVICE CORPORATION 22594 ARDMORE PARK DRIVE ST. CLAIR SHORES, MI 48081-2011 586-777-0945			03-0326 DRAWING NUMBER